

# WEATHERFIELD ACADEMY

Head of School: Mr L Meenan

Brewers Hill Road  
Dunstable  
Bedfordshire  
LU6 1AF

Tel/Fax: 01582 605632

E-mail: [school@weatherfield.beds.sch.uk](mailto:school@weatherfield.beds.sch.uk)

31<sup>st</sup> January 2025

Dear Parent/Carers

## Safeguarding at Weatherfield Academy

Carol Patterson, Designated Safeguarding Lead (DSL), [cpatterson@weatherfield.beds.sch.uk](mailto:cpatterson@weatherfield.beds.sch.uk)

Sarah Berresford, Deputy Designated Safeguarding Lead (DDSL),  
[sberresford@weatherfield.beds.sch.uk](mailto:sberresford@weatherfield.beds.sch.uk)

Katie Phillips, Safeguarding Governor, [kphillips@weatherfield.beds.sch.uk](mailto:kphillips@weatherfield.beds.sch.uk)

Welcome to our newsletter. Safeguarding at Weatherfield Academy continues to be monitored closely by the DSL, DDSL and Safeguarding Governor along with Central Beds Council Staff to ensure all procedures and protocols are working at the best level possible to ensure safety of all here at Weatherfield Academy.

The DSL and DDSL meet regularly with the Chair of Governors and Safeguarding Governor.

## LATEST NEWS – 31st January 2025

### MOBILE PHONES/IPADS

Can I please remind all parent(s)/carer(s) to speak to their sons/daughters about our policy at Weatherfield Academy regarding mobile phones, ipads etc.. Our behaviour policy states that – pupils are allowed to bring phones to school on transport, or walking to and from school. Once in school the phones are to be switched off and handed to the form tutor where they are locked away for the day. In Upper School students hand their phones in but also have the opportunity, where appropriate to keep their phones in their bags in their locked lockers with their Tutor's and Senior Management Team's agreement.

If a pupil **does not hand their phone** in and uses it during the day **sanctions** will take place.

The sanction could be a break or lunchtime detention and contact parent(s)/carer(s) to reiterate the non-use of mobile phones in school

Exceptions to this for example medical or personal will be under the agreement of the class teacher and Senior Management Team

Pease can you speak to your sons/daughters about this thank you very much.

If you have any questions, concerns or general comments please email me in the first instance – Carol Patterson, DSL, [cpatterson@weatherfield.beds.sch.uk](mailto:cpatterson@weatherfield.beds.sch.uk)

## Weekly bulletin for families

The latest news from Central Bedfordshire Children & Families Service for families in your local area. Keep up to date with all events, support and news from your local area. Would you like to receive our weekly Families bulletin? Click [here](#) to subscribe

## Central Bedfordshire Consultation

Central Bedfordshire Council is inviting residents to have their say on its draft Children and Young People's Plan for 2025 to 2028, as a consultation launches today (Wednesday 18 December).

A company limited by guarantee, registered in England and Wales, number 07939260

*Weatherfield Academy is a Registered Charity, number 0106025162*



The Children and Young People's Plan sets out a clear plan for providing services for children and young people to make sure they get the help, opportunities, and resources they need to do well. The plan contains 12 wishes that reflect four main themes that continuously were raised as being important for young people, including safety, the importance of friends and family, having things to do and places to go, and being successful.

The plan was developed following a series of activity between July and September, where the Council engaged with children and young people, parents, carers, and professionals who work with them. Data from existing surveys further informed the plan's priorities.

While led by Central Bedfordshire Council, the plan is a shared vision and was developed in partnership with organisations including the Bedfordshire, Luton and Milton Keynes Integrated Care Board (BLMK ICB), Public Health, Bedfordshire Police, and local voluntary organisations.

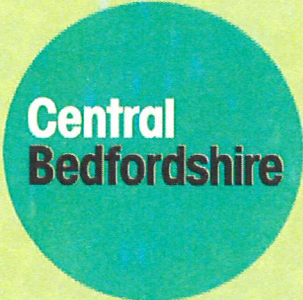
Yours sincerely



Mr L Meenan  
Head of School

A company limited by guarantee, registered in England and Wales, number 07939260  
*Weatherfield Academy is a Registered Charity, number 0106025162*



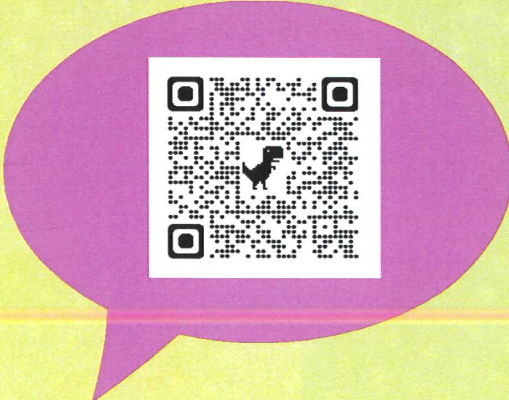


# Do you have a view on support for children and young people?

Our Children and Young People's plan outlines the steps we'll take to make sure they get the help, opportunities, and resources they need to do well.

Find out more at [www.centralbedfordshire.gov.uk/consultations](http://www.centralbedfordshire.gov.uk/consultations)

The consultation closes on Monday 17 February 2025.





KIDS IN ACTION'S

# HOLIDAY CLUB

**Tuesday 18th February**  
**Thursday 20th February**  
**Saturday 22nd February**

[laura@kidsinaction.org.uk](mailto:laura@kidsinaction.org.uk)

The Base, Unit 26,  
Apex Business Centre,  
Boscombe Road,  
Dunstable, LU5 4SB  
**01582 477762**

CHARITY REG NO. 1193660





**CLIMB  
QUEST**  
MILTON KEYNES



# SCHOOL OFFER FOR CLIMB QUEST

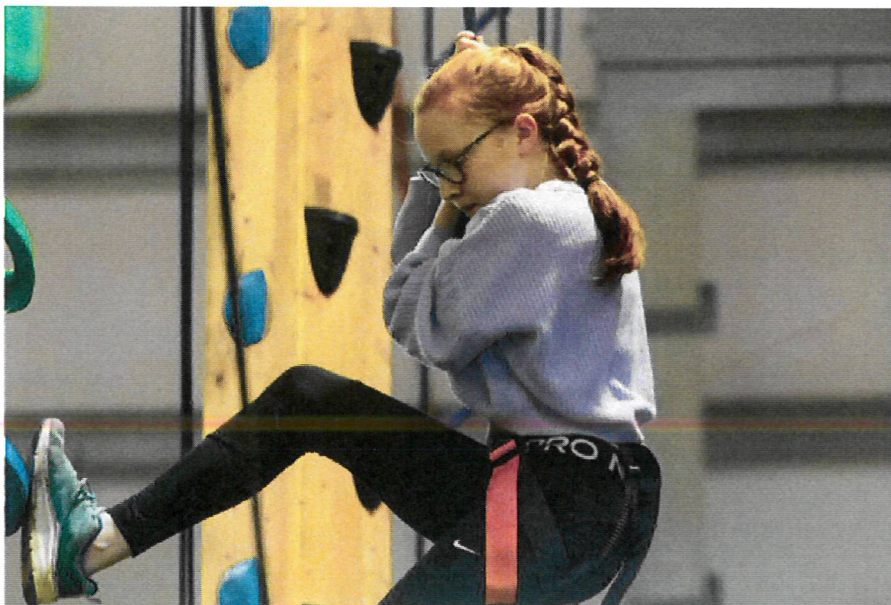
Following our recent school trip to Climb Quest, they have sent us a discount code that can be used by any of our students who would like to visit before the end of February.

Climb Quest Milton Keynes, has over 25 climbing challenges suitable for all ages and abilities.

## SAVE 20%

Book a session online and use code **MKSJAN125** at checkout to get **20% off** climbing sessions\* up until **28.2.25**

*\*excludes birthday parties, exclusive group bookings, vouchers and after-school clubs. Code only valid for sessions on or before 28.2.25*



Find out more:  
[climbquest.co.uk](http://climbquest.co.uk) or  
[@climbquestmk](https://www.instagram.com/climbquestmk) on  
socials